

FINENESS

Zebrazero

Introducing

Zebrazero



The texture of these laminates is a beautiful replication of nature, matching precisely with the woodgrain design for the most realistic feel yet produced in HPL.

These laminates have significant advance technological qualities that offer them an unmatched resistance to atmospheric factors and gives them soft and warm touch.

Key features



Anti Viral



Weatherproof



Attractive



Light - Fast



Mechanically
Sturdy



Excellent Fire
Retardant



Wide range of
colours & designs



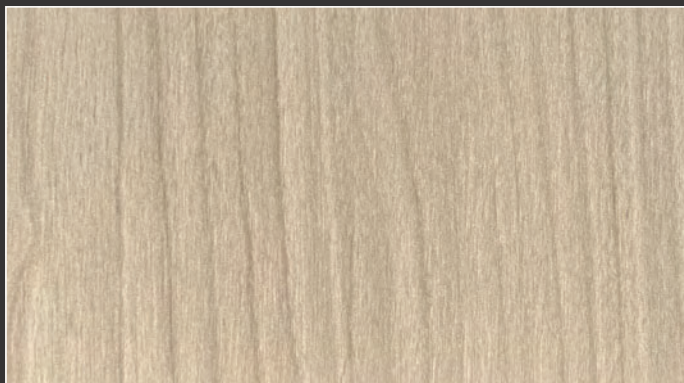
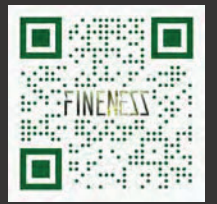
Termite
resistant



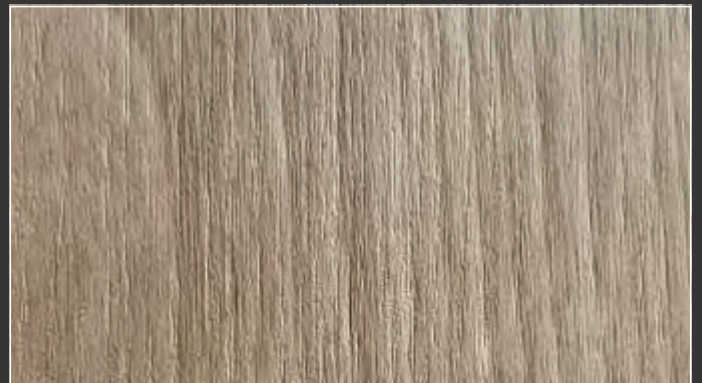
Environment
friendly



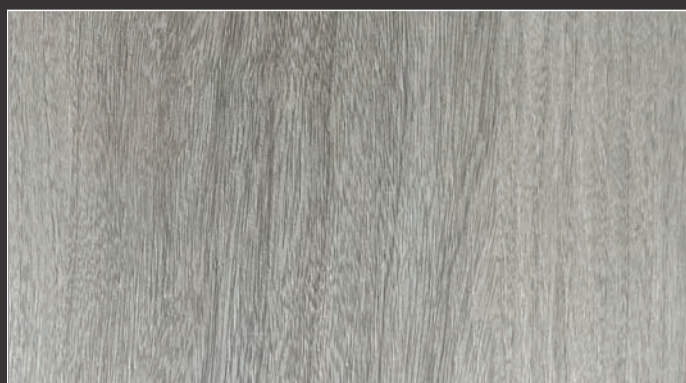
Easy to clean



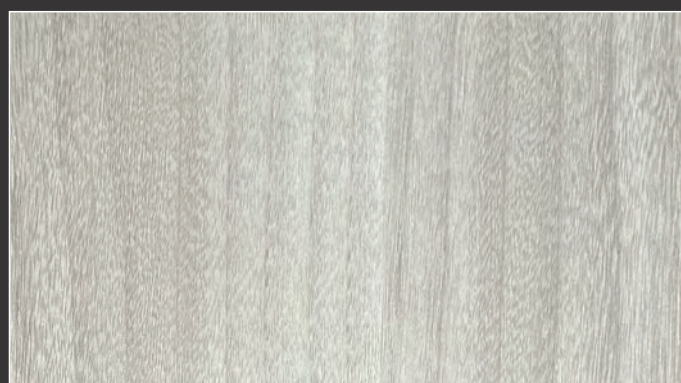
FNL W543ZVF
Noce Light



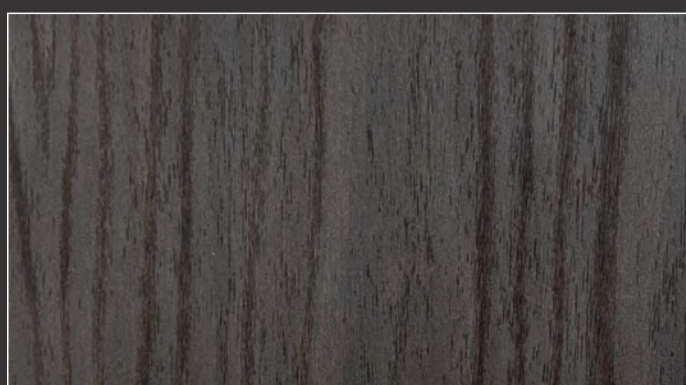
FNL W433ZVI
Tulip Silver



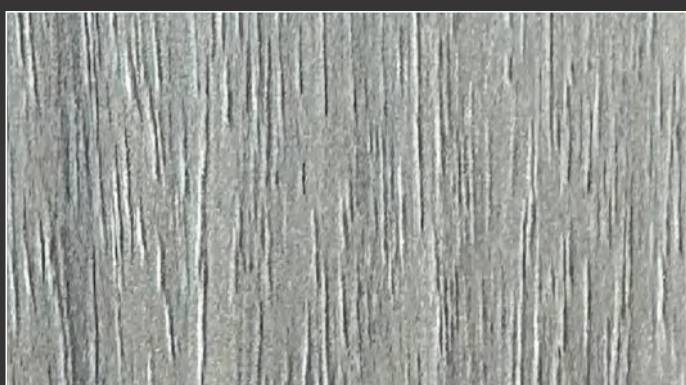
FNL W327ZA
Almond Steel Grey



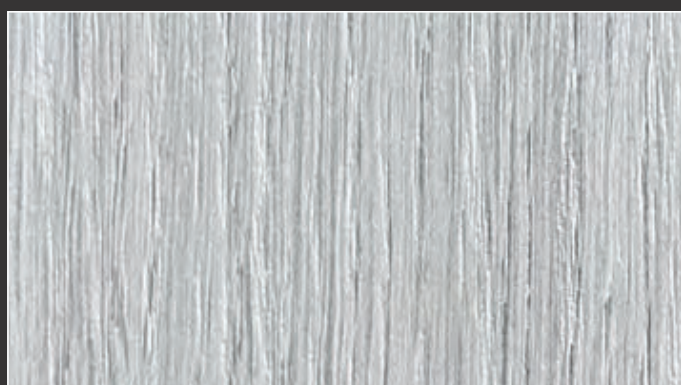
FNL W326ZA
Almond Light Grey



FNL W331ZV
Carbonised Walnut Dark



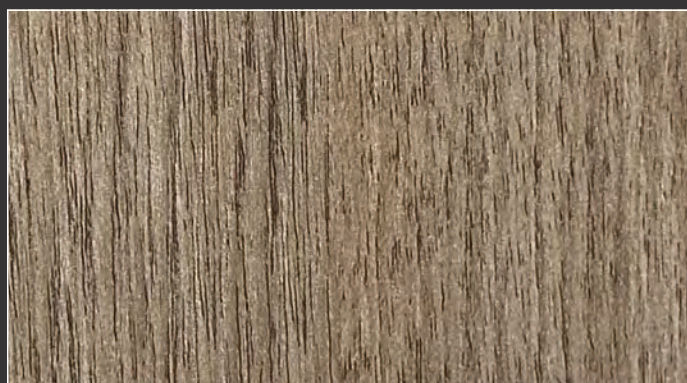
FNL W553ZVIIF
Vintage Noyer Dusky



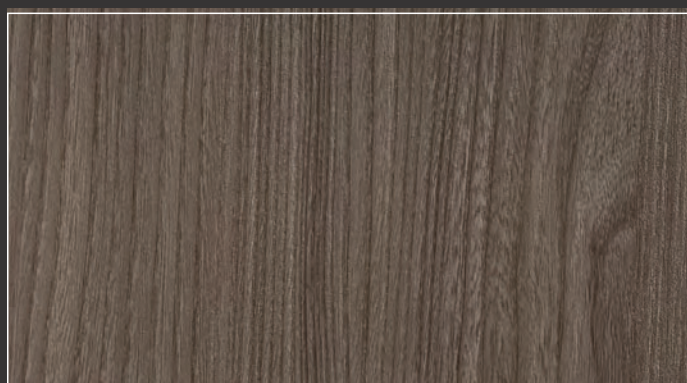
FNL W501ZXXIV
European Oak



FNL W591ZXXVII
Grey Quill

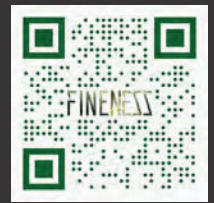


FNL W364ZVI
Oak Crown Dyed



FNL W558ZVF
Line Oak Earthy





FNL W426TXLIV
European Maple White



FNL W100ZIV
Coal Black

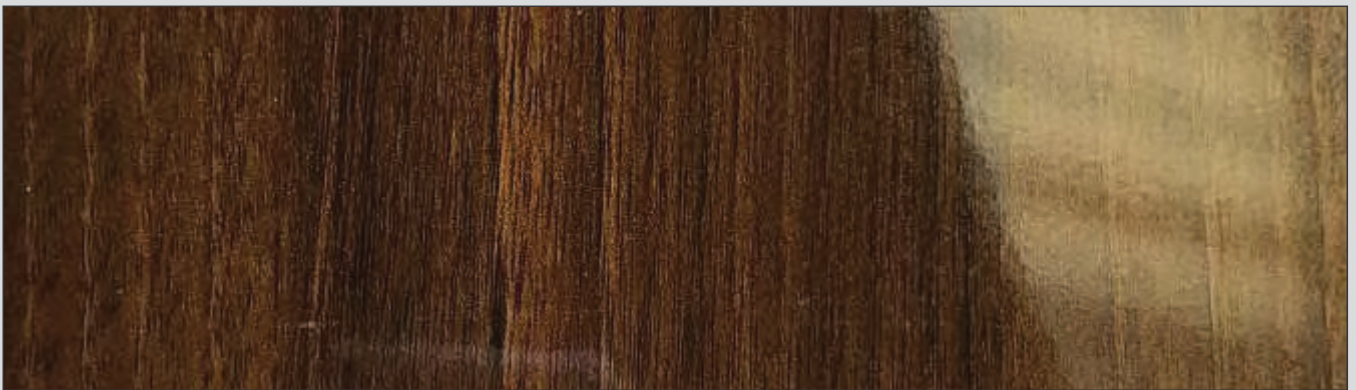


FNL W029ZIV
Metalic Cream

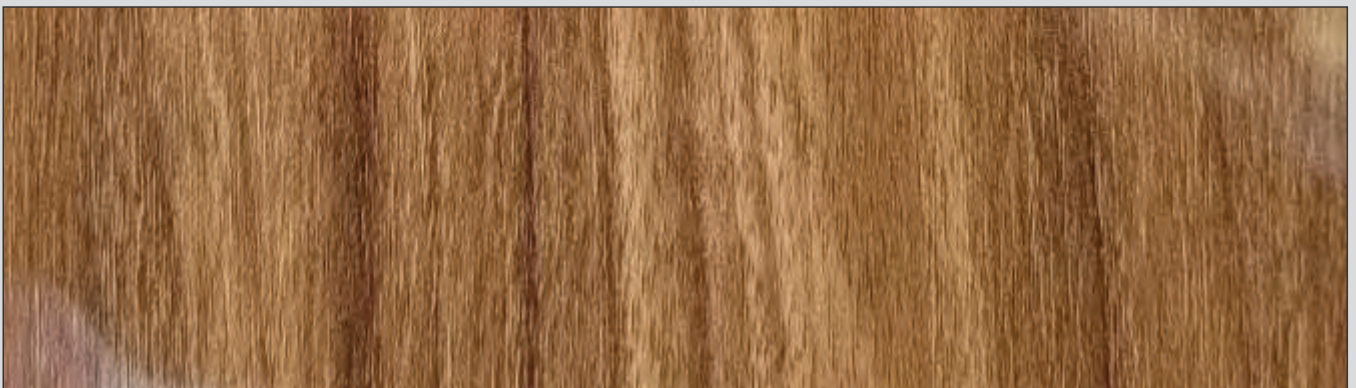




FNL W338HG
Smoke Zara



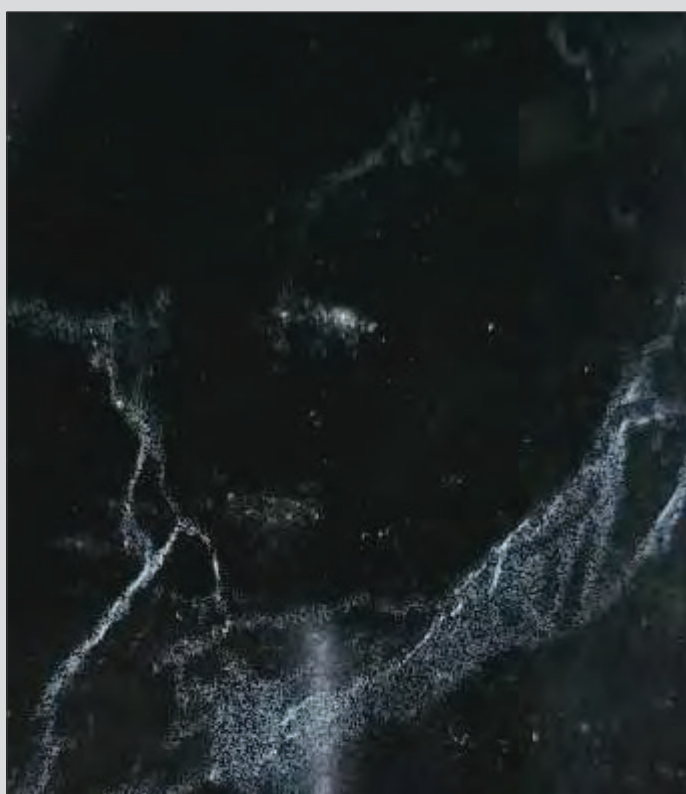
FNL W291HG
Golden Walnut



FNL W542HG
Noce Woody

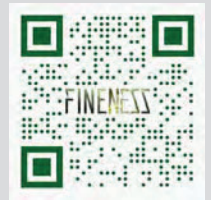


FNL M846DM
Light Grey Parrarel

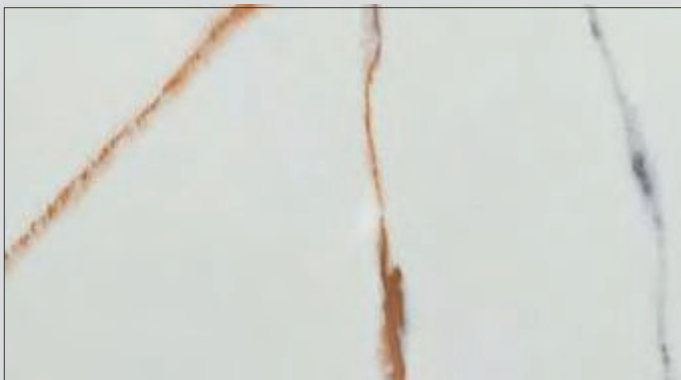


FNL M831HG
Nero Marquine





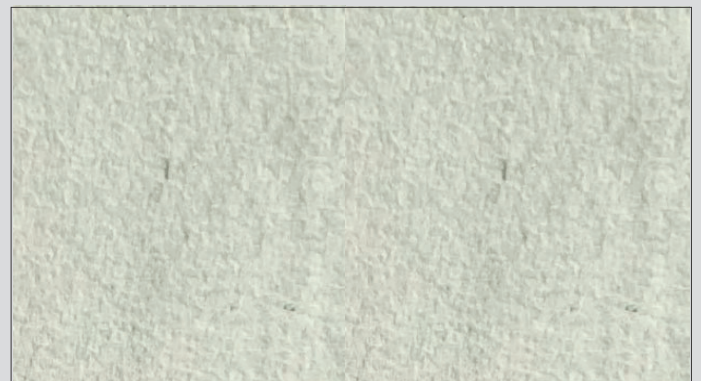
FNL M869HG
Salvano Marble



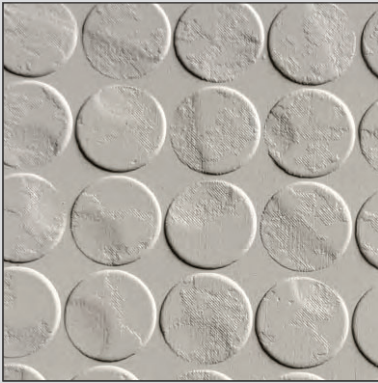
FNL M812HG
Carrara Marble



FNL M859HG
Piatra Marble



FNL M818RS
Milk Stone



FNL ME941PL
Polka Frosty



FNL ME943PL
Polka Slate



FNL ME946PL
Polka Espresso



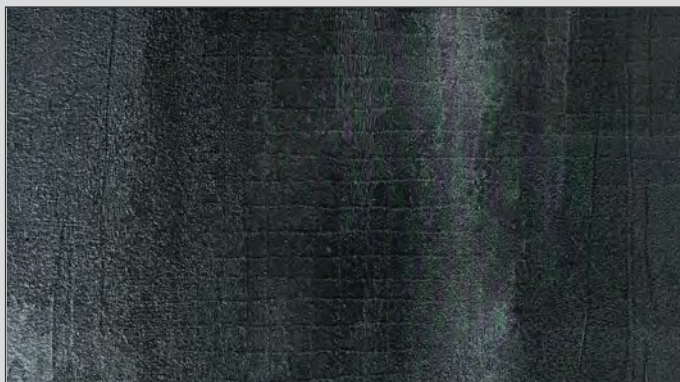
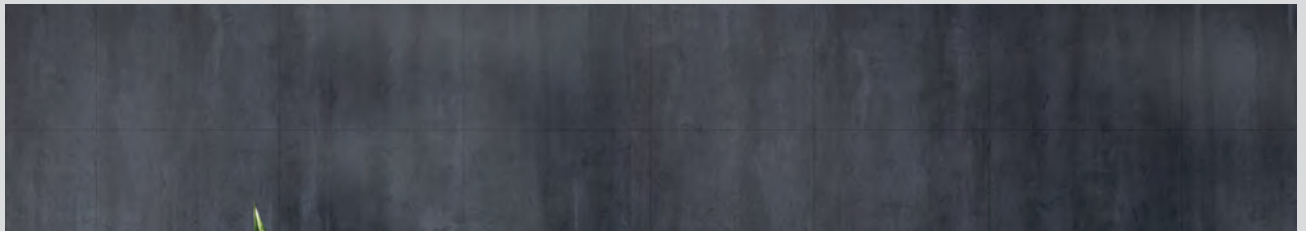
FNL S1033SHG-Flute
Tidal Sand Glow



FNL S567SHG-Flute
Cloud Grey Glow

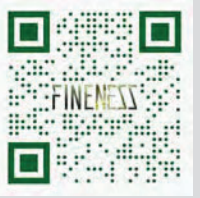


FNL S1049SHG-Flute
Charcoal Grey Glow

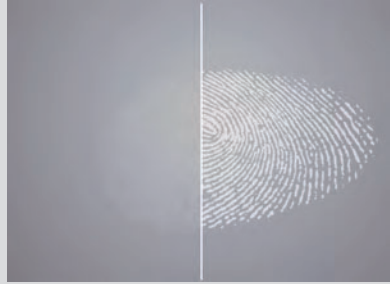


FNL W344ZXXIII
Turkish Stone Smoky



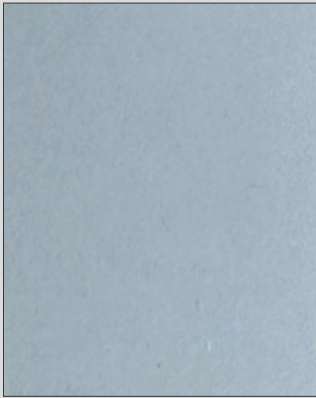


ANTI - FINGERPRINT LAMINATES :

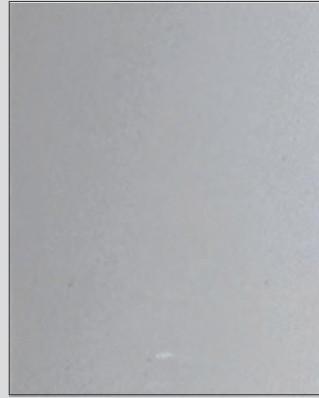


Anti-fingerprint collection will add a touch of grace, ease, and comfort. Processed and coated from the finest glass materials, our anti fingerprint collection is the long-lasting partner you've been looking for!

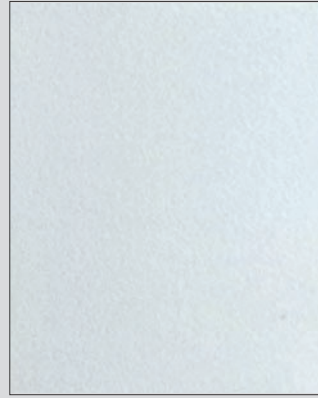
Anti-Fingerprint surface comes with an ultra soft touch and deep matt finish to absorb light for harmonious interior spaces. Diverse patterns with a smooth feel softened by a matt surface, anti-fingerprint properties for projects that make a statement.



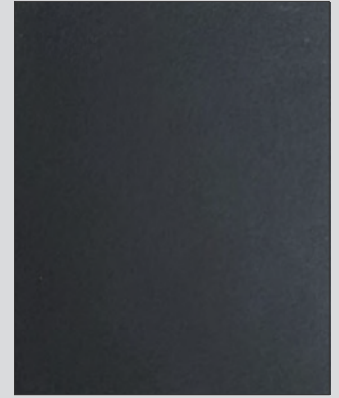
FNL S112AF
Pastel Grey



FNL S113AF
Dark Vanilla



FNL S120AF
White



FNL S117AF
Midnight





FNL S1061SD
Evening Off White



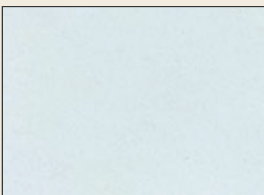
FNL S082GL
Issabelline



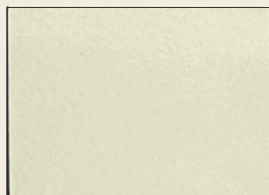
FNL S083SD
White Coffee



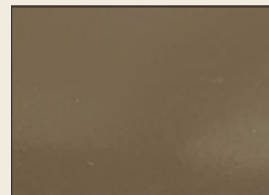
FNL S123SD
Acacia Green



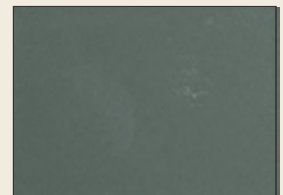
FNL S1061HG
Evening Off White



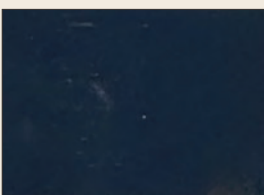
FNL S111HG
Sandal White



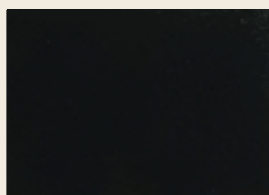
FNL S1017HG
Jaisalmer Brown



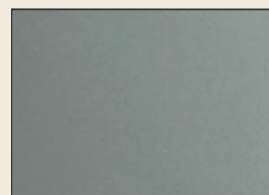
FNL S123HG
Acacia Green



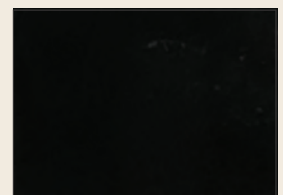
FNL S056HG
Dark Electric Blue



FNL S1706HG
Charcoal Dark



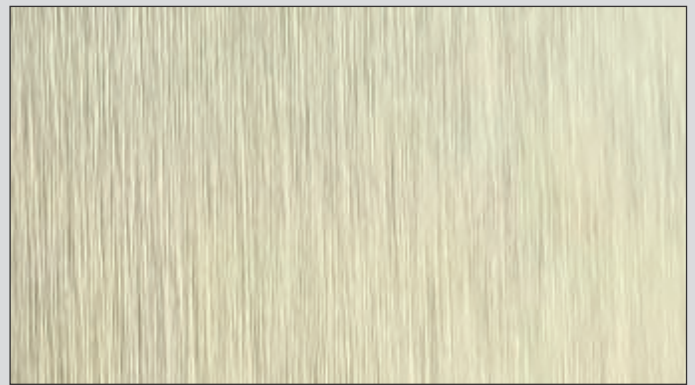
FNL S1092HG
Laxon Grey



FNL S142HG
Black Magic



FNL ME959MT
Copper



FNL ME9598MT
Silver



FNL ME9585MT
Gold

COMPACT LAMINATES

Awarded European CE Certification for its both Internal and External application Compact laminates range by ITC Inc., Czech Republic and has fulfilled all requirements as applicable as per EN 438-7:2005.



THICKNESS

3 - 25 mm

FEATURES



Weatherproof



Mechanically
Sturdy



Attractive



Excellent fire
Retardant



Wide range of
colours & designs



Light - fast



Termite
resistant

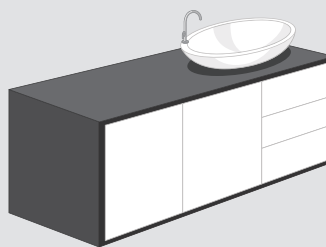


Environment
friendly

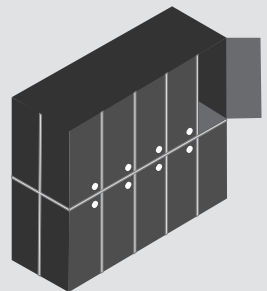
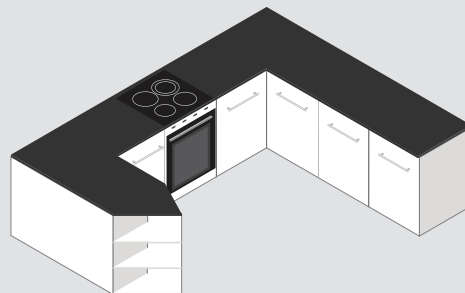


Easy to clean

APPLICATION



- Worktop
- Island Counter-top
- Furniture
- Bay Window
- Backsplash
- Partition
- Locker

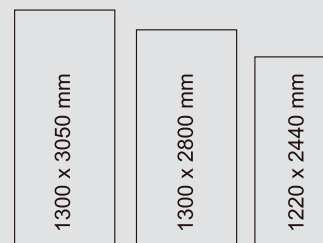




FACADE EXTERIOR CLADDING

FACADE Exterior Cladding High Pressure Laminate (HPL) panels have a decorative surface that is suitable for exterior applications. Special quality resins provide extremely effective weather protection to external facades. These HPL are produced in lamination processes under high pressure and temperature. They are resistant to colour fading and are weather-proof with special protection against inclement weather according to standard EN432:2005 Part 6.v

BOARD SIZES



THICKNESS

3 - 25 mm

APPLICATIONS

- Wall and facade linings
- Cladding of exhibition buildings
- Sporting and entertainment complex
- Decoration of commercial sites
- Residential dwellings
- Silhouette profiles
- Fences
- Facade Claddings
- Business entry protals
- Functional constructions
- Balcony Claddings
- Partitions
- Rear ventilated facades
- Ceilings
- Outdoor furnitures
- Public facilities
- Playground facilities
- Sport facilities
- Sun protections
- Attic Claddings

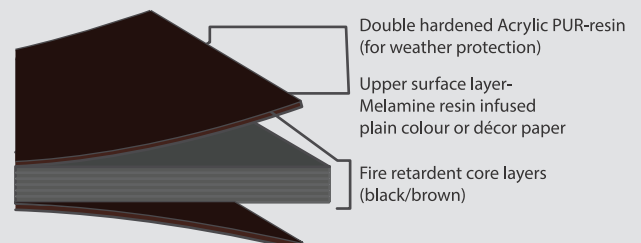
All designs available in compact laminate in Normal and Exterior grade

FACADE FIRE RETARDENT

FACADE FIRE RETARDENT Exterior panels have extreme fire retardant quality which make them difficult ignite and have a low spread of flame. The evacuating time in case of fire is therefore prolonged. Produced in lamination processes under great pressure and high temperature, the panels have excellent weather protection achieve with protective coating consists of double hardened acrylic polyurethane resins.

FACADE FIRE RETARDENT Exterior panels come with these variants:

- 1) Front-side decor only
- 2) Both side decor
- 3) Black core
- 4) Brown core



Care & Maintenance

Your decision to select our Laminate will bring you years of quality performance. Everyday cleaning of our products is as simple as a quick wipe with a damp sponge. All resist muddy fingerprints, coffee spills and so much more.

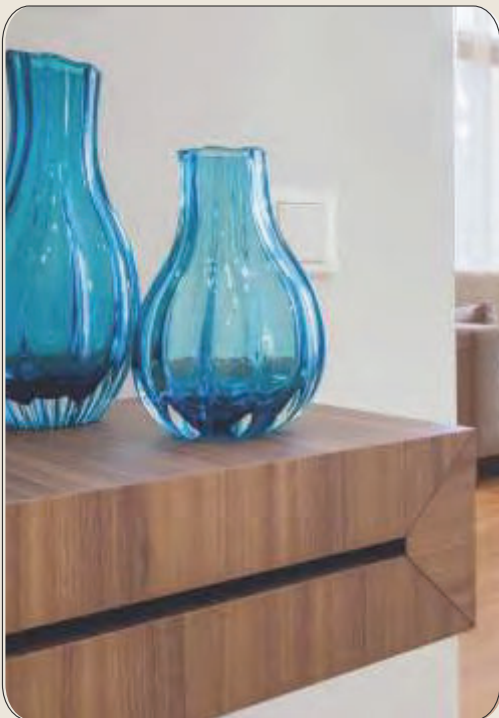
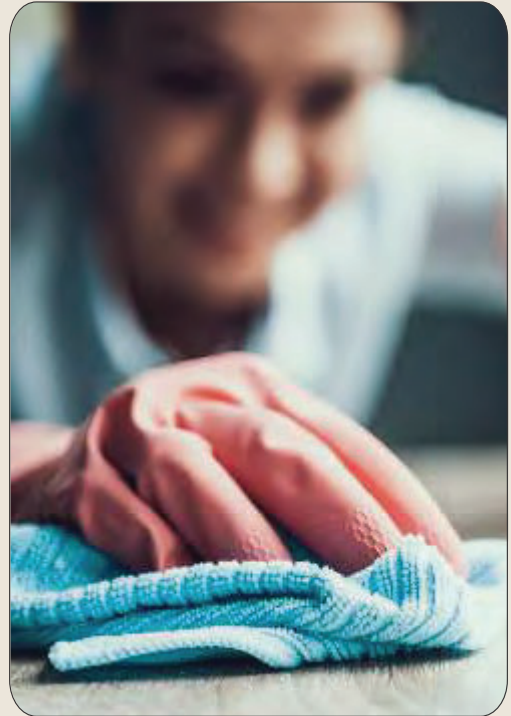
Please read and follow the recommended care and cleaning procedures:

ROUTINE CARE

- To clean the surface, use a damp cloth or sponge and a mild soap or detergent. Rinse thoroughly with warm water and wipe dry.
- Difficult stains such as coffee or tea can be removed using a mild household cleaner and a soft bristled brush, repeating as necessary.
- If a stain persists, use a paste of baking soda and water and apply with a soft bristled brush. Light scrubbing for 10 to 20 strokes should remove most stains. Although baking soda is a low abrasive, excessive scrubbing or exerting too much force could damage the decorative surface, especially if it has a gloss finish.
- Stubborn stains that resist any of the above cleaning methods may require the use of undiluted household bleach or nail polish remover. Apply the bleach or nail polish remover to the stain and let stand no longer than two minutes. Rinse thoroughly with warm water and wipe dry. This step may be repeated if the stain appears to be going away and the color of the laminate has not been affected.

WARNING: Prolonged exposure of the laminate surface to bleach will cause discoloration.

- Hot pans and heat-producing appliances (such as electric skillets), when set directly upon counter-tops, can damage the product's beauty. Always use a heat shield, hot pad or trivet.



CAUTION PLEASE!

- Addict or abrasive cleaners can damage laminate surfaces; do not use them.
- Drain cleaners containing lye will permanently damage any FINENESS Laminate surface. If you spill a drain cleaner, wipe it up immediately and rinse several times with water.
- Hair, Textile and food dyes can cause permanent stains. If dye should happen to spill, wipe it up immediately with dish washing detergent or an all-purpose cleaner.
- Never place pots or dishes directly from the oven or burner on an unprotected laminate surface; such extreme heat can cause cracking or blistering.
- Do not work with oven cleaners on an unprotected counter-top. Wipe spills away promptly and rinse several times with water.
- Rust removers contain harsh chemicals which will quickly cause permanent damage. If a spill occurs, wipe off all residue immediately, wash thoroughly with soapy water and rinse several times.
- Steel wool and other abrasive pads will damage FINENESS Laminate. Don't use them for cleaning and don't store steel wool pads on your counter-top; the metal can rust and leave stains.
- Toilet cleaners contain harsh chemicals that can cause permanent damage. If spills occur, wipe up immediately, wash surface with soapy water and rinse several times.

Technical Specification

S. No.	Properties		Specified Value BSEN438	Typical FinenessValue
1	Thickness	mm	1 ±0.10	1 ±0.10
2	Resistance to immersion in boiling water			
	a)Mass increase	%, Max.	10	7.5
	b) Thickness increase	%, Max.	12	8.5
	c)Appearance	Grade, Min.	4	4
3	Resistance to surface wear	Rev. Min.	350	380
4	Resistance to dry heat at 180°C			
	a)Appearance:Gloss	Grade, Min.	3	4
	b)Appearance: Others	Grade, Min.	4	5
5	Dimensional stability at 20°C	(L)%, Max.	0.55	0.40
		(T)%, Max.	1.025	0.85
6	Dimensional stability at elevated temperature	(L)%, Max.	0.375	0.25
		(T)%, Max.	0.625	0.50
7	Resistance to impact by small diameter ball	N,Min.	20	30
8	Resistance to scratching	N,Min.	2	2.5
9	Resistance to staining:			
	a)Group 1&2	Grade, Min.	5	5
	b)Group3&4	Grade, Min.	4	5
10	Resistance to cigarette burns	Grade, Min.	3	4
11	Resistance to cracking	Grade, Min.	4	5
12	Resistance to steam	Grade, Min.	4	5
13	Resistance to colour change in			
	a)Xenon arc light	Grade, Min.	6	6
	b)Enclosed Carbon Arc Light	Grade, Min.	5	5

Zebrazero

Marketing & Distribution by

Fineness Laminations
73 Willandra Drive Epping 3076 Victoria

Contact +61 3 9034 6416
Email info@fineness.com.au
www.fineness.com.au

Kultar Saini
Managing Director
Mobile +61 488 283 780